



LARK
S a n i M o d u l e

LOTUS
Standard SaniModule

Lark SaniModule

The multifunctional SaniModule is ideal for a camping park or free-standing city toilets. Use of a high quality waterproof materials will allow you to enjoy the properties of such a perfect solution for a long time.



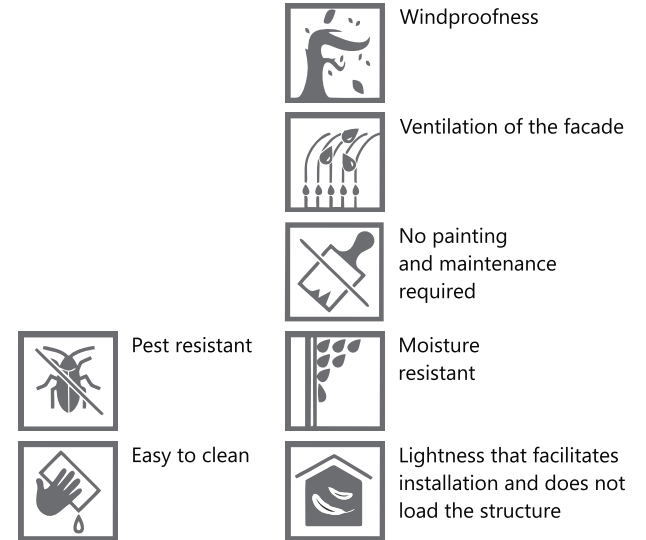


3

Facade

Vinyl siding, equivalent to wood siding, comes from the US and Canada, where today it is the most chosen

Vinyl siding ensures a durable and aesthetic facade for years. Small weight, fast installation. This cladding does not require to execute any additional maintenance operations or periodical repairs during the whole siding lifetime.



Roof

Metal roofing sheet is profiled from double-sided galvanized sheet and coated with several layers of varnish, which guarantees its longevity.

- High resistance to mechanical damage and external loads
- Elasticity and flexibility
- High light transmission
- Lightness
- 10 yers warranty





Boiler room

The Ariston electric water heater is a smart device with a double water tank.

ANTI-LEGIONELLA FUNCTION

Once a month, the water temperature rises automatically above 65 °C to eliminate bacteria and ensure water hygiene.

ANTI-FRAUD SYSTEM

It protects the device against a temperature drop below 5 °C.

SELF-DIAGNOSIS

In the event of a fault, an error code is displayed on the display to easily identify the cause.

PROTECTION AGAINST STARTING "DRY"

In the event of a leak or lack of water in the device, it turns off the heater to prevent it from burning out.

THE FUNCTION OF ACTIVE ELECTRICAL PROTECTION

After finishing the heating process, the heater is completely disconnected from the power supply to guarantee maximum safety.

SMART touch panel BLUE-TECH

An intelligent and intuitive display for easy temperature management with information on water preparation for the first shower.



Walls and floor

The walls and floor are made of high quality, waterproof P5 board, which thanks to its properties will allow a long time to maintain a fresh and new look of SaniModule Lark interior. In addition, covering the floor with a non-slip layer will take care of the maximum safety of users.

- resistant to abrasion
- impact resistant
- hygienic
- resistant to scratches
- antibacterial
- resistant to high temperature

P5 boards are very easy to keep clean. As a rule wiping them with a soft cloth and warm water is enough . If necessary, cleaners can be used.

Accessories

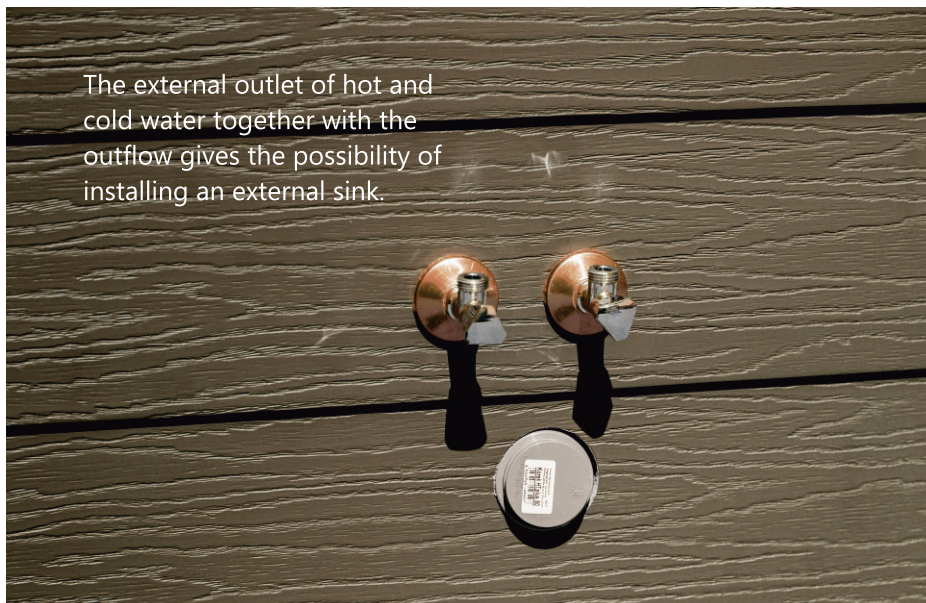
Hermetic sockets.



An external tap will allow you to connect a garden hose quickly.



The external outlet of hot and cold water together with the outflow gives the possibility of installing an external sink.



Handle for locking the door.









KOLO

LARK
SaniModule



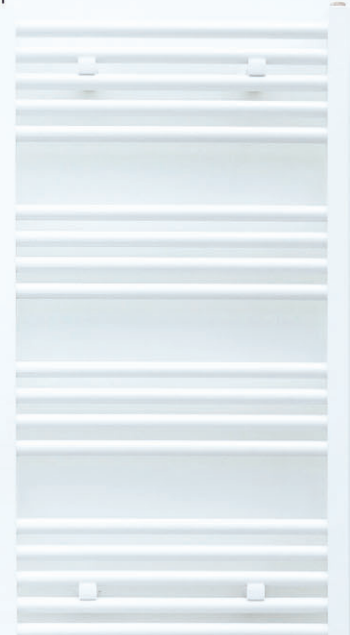
Permanent beauty bath ceramics

The one-piece monolithic shower cabin, made from the highest quality material, thanks to the integration of the walls with the shower tray, ensures excellent protection against leakage.

A wall-hung toilet and a countertop washbasin are elements of bathroom ceramics emphasizing high standard and unique style.



Bathroom fan



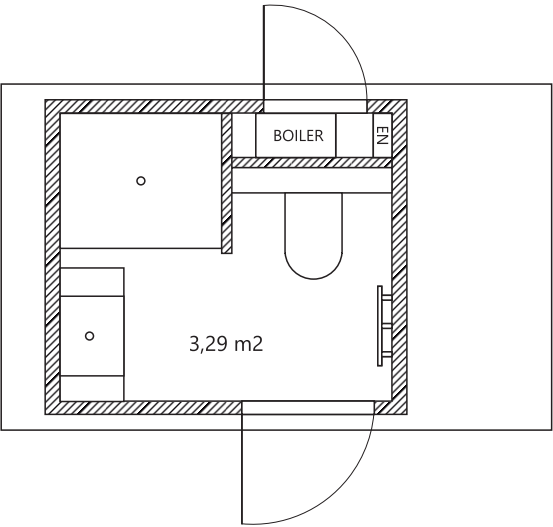
Additional accessories



Lark SaniModule Lotus

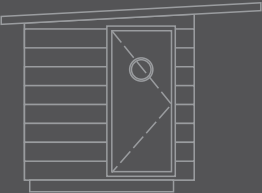
REGULAR

Combination of a shower cabin with a wall-hung toilet and a countertop washbasin.



Wall: 2,0 x 2,3 m
Roof: 2,2 x 3,5 m
Height: 2,55 m

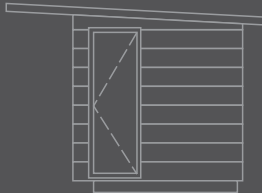
front



right



back

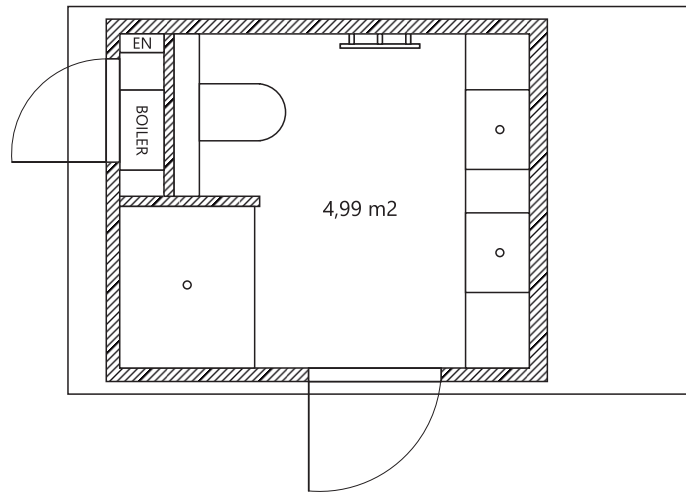


left



Lark SaniModule Lotus PLUS

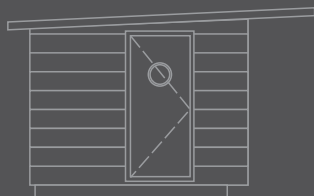
More usable space. Combination of a shower cabin with a wall-hung toilet and two washbasins.



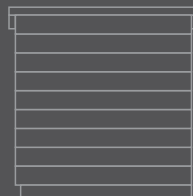
Wall: 2,3 x 2,8 m
Roof: 2,5 x 4,0 m
Height: 2,55 m



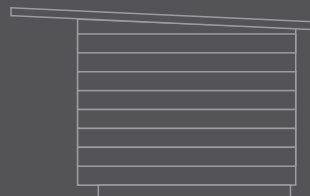
front



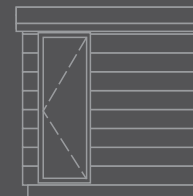
right



back



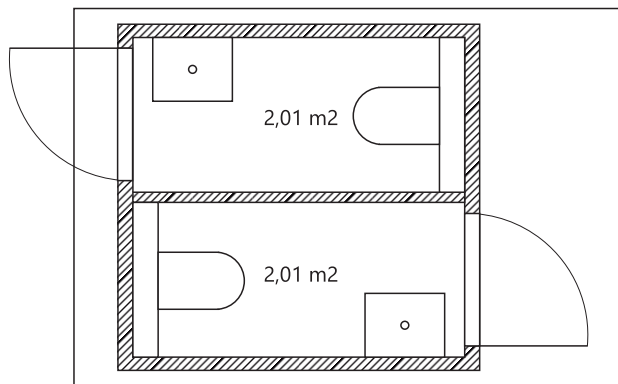
left



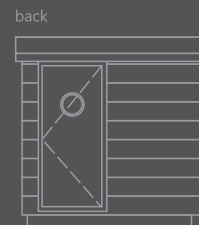
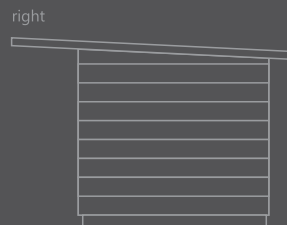
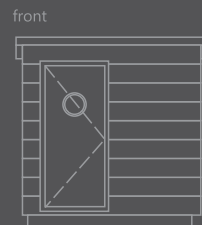
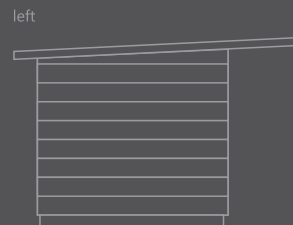
Lark SaniModule Lotus

DUO 1

The module is a combination of two separate toilets with washbasins and separate entrances from both sides.



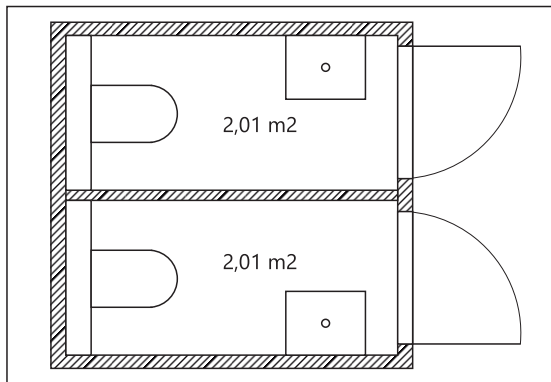
Wall: 2,3 x 2,3 m
Roof: 2,5 x 3,5 m
Height: 2,55 m



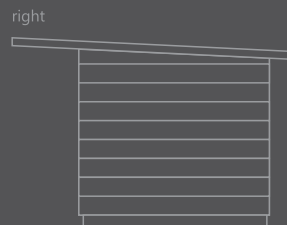
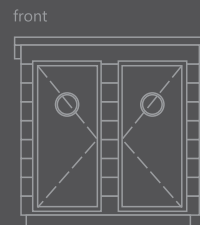
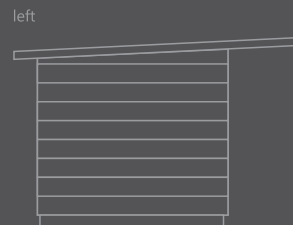
Lark SaniModule Lotus

DUO 2

The module is a combination of two separate toilets with washbasins and separate entrances from one sides.



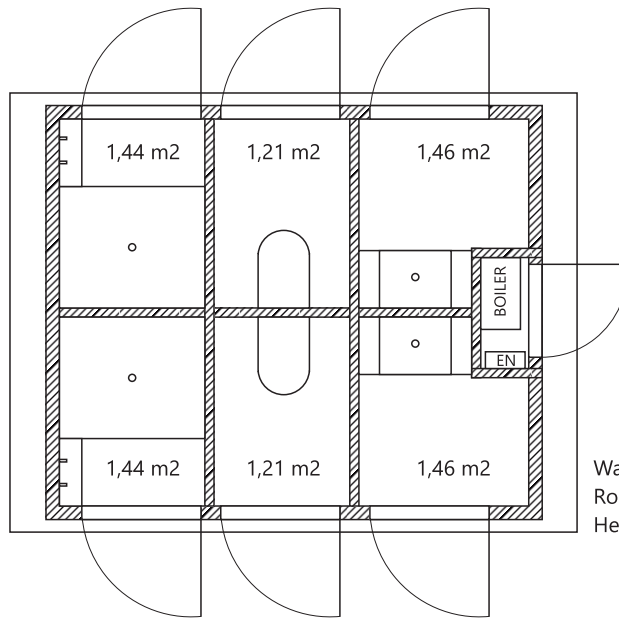
Wall: 2,3 x 2,3 m
Roof: 2,5 x 3,5 m
Height: 2,55 m



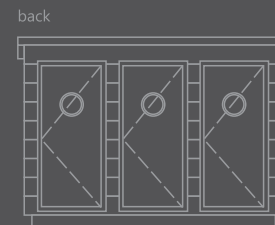
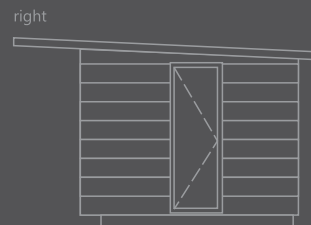
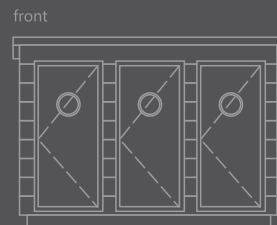
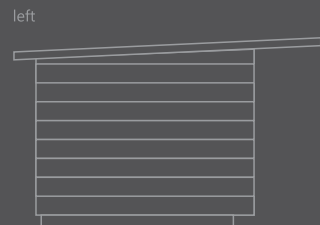
Lark SaniModule Lotus

COMPLEX

The module is a complex which includes two separate toilets, two separate showers and two separate washrooms.



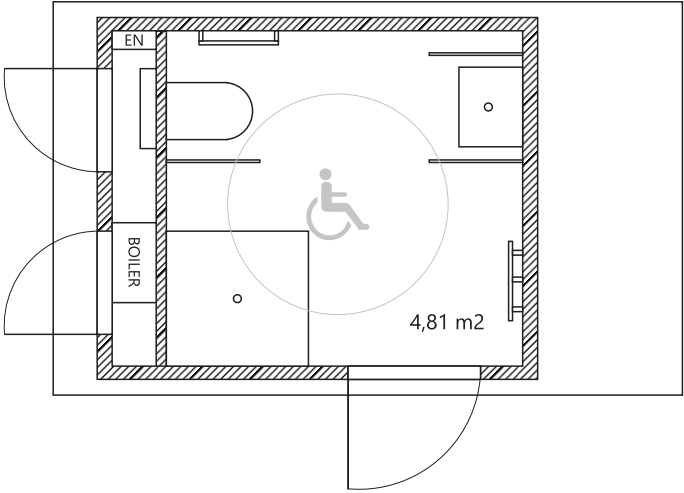
Wall: 3,0 x 3,5 m
Roof: 3,2 x 4,0 m
Height: 2,55 m



Lark SaniModule Lotus

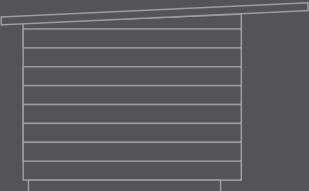
ACCESS

The module is adapted to the needs of people with reduced mobility. Combination of a shower with toilet and sink and additionally equipped with a seat with a handrail.

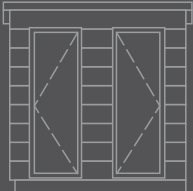


Wall: 2,3 x 2,8 m
Roof: 2,5 x 4,0 m
Height: 2,55 m

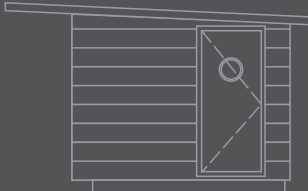
left



front



right

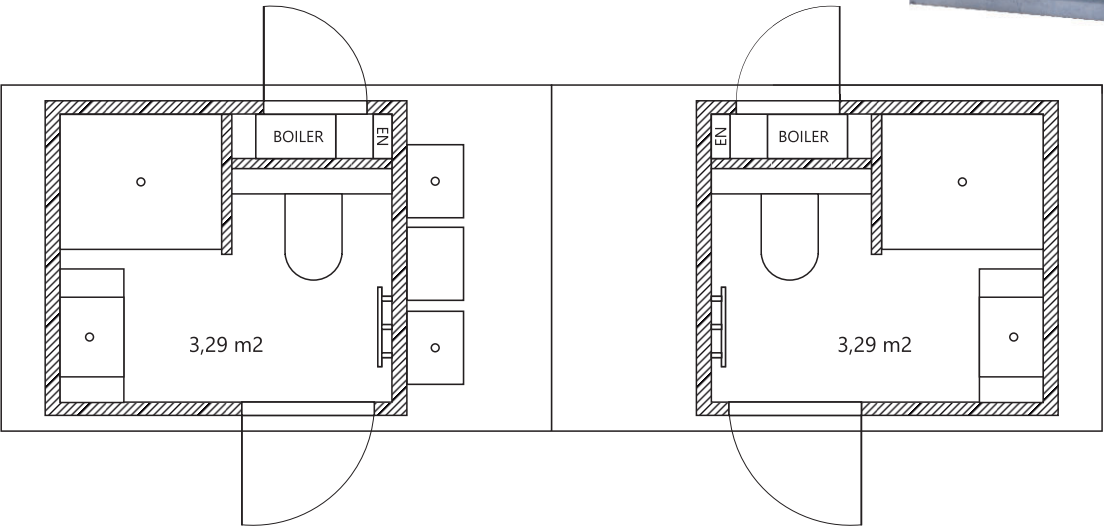


back



Lark SaniModule Lotus PREMIUM 1

The module is a complex of two SaniModule models connected with a roof between. In this area there is a possibility to put two sinks.



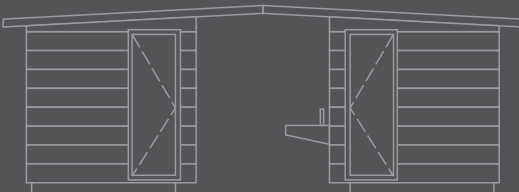
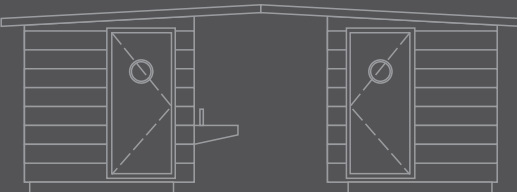
Wall: 2,0 x 2,3 m (1 module)
Roof: 2,2 x 6,4 m
Height: 2,55 m

left

front

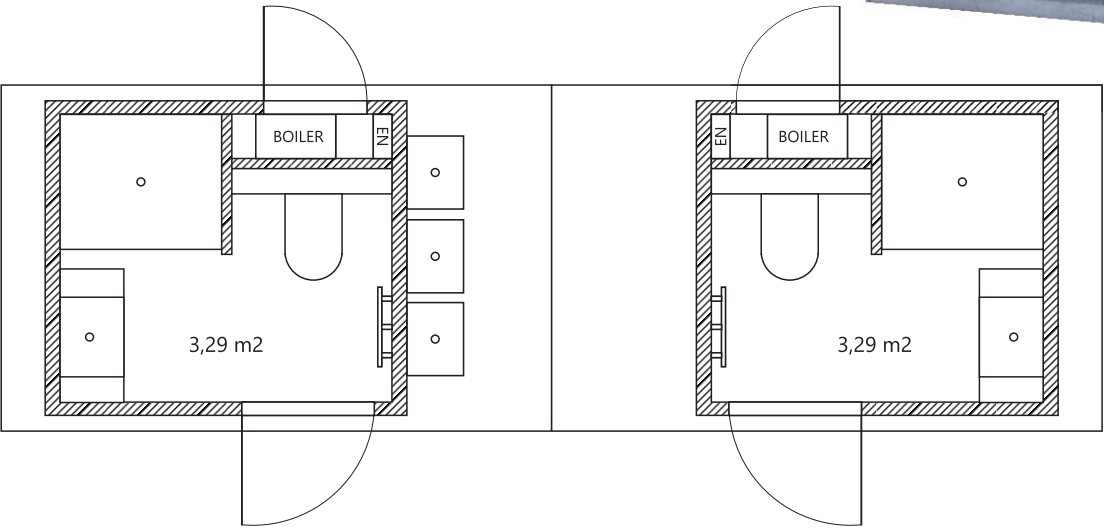
back

right



Lark SaniModule Lotus PREMIUM 2

The module is a complex of two SaniModule models connected with a roof between. In this area there is a possibility to put three washbasins.



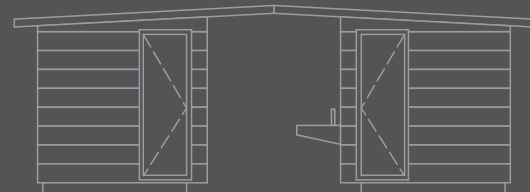
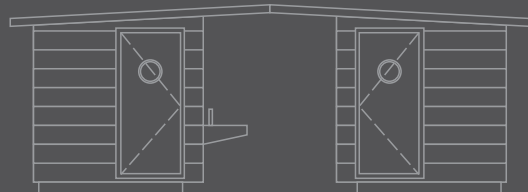
Wall: 2,0 x 2,3 m (1 module)
Roof: 2,2 x 6,4 m
Height: 2,55 m

left

front

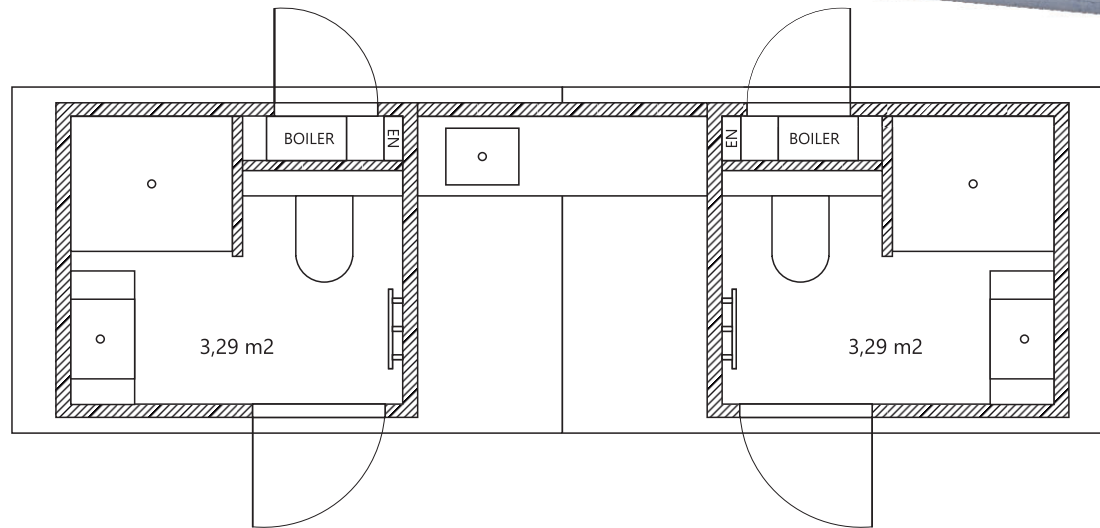
back

right



Lark SaniModule Lotus PREMIUM 3

The module is a complex of two SaniModule models connected with a roof between. In this area there is a possibility to put outside kitchen module.

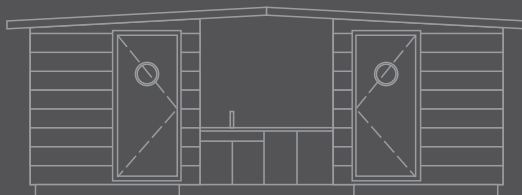


Wall: 2,0 x 2,3 m (1 module)
Roof: 2,2 x 6,4 m
Height: 2,55 m

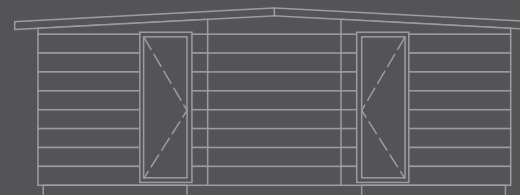
left



front



back

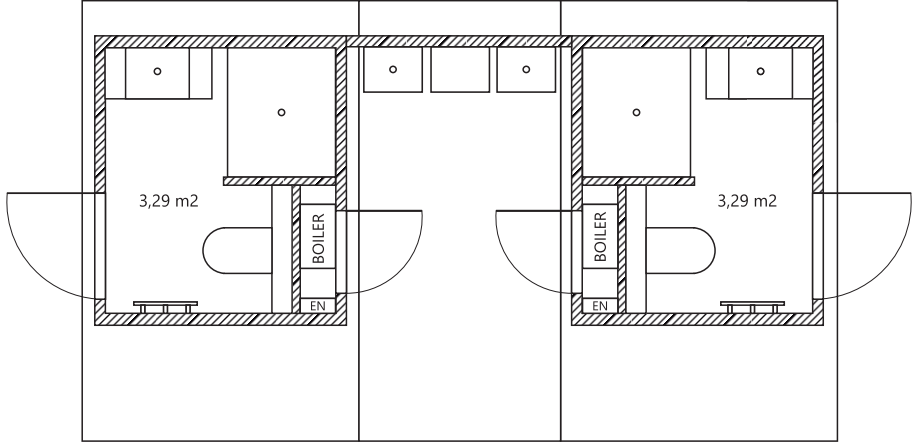


right



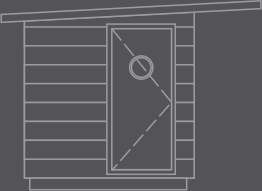
Lark SaniModule Lotus PREMIUM 4

The module is a complex of two SaniModule models with extra roof between. In this area there is a possibility to put two sinks.

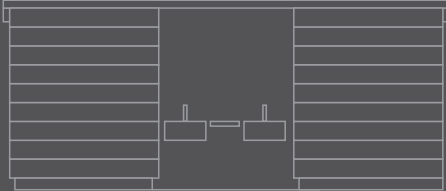


Wall: 2,0 x 2,3 m (1 module)
Roof: 3,5 x 5,6 m
Height: 2,55 m

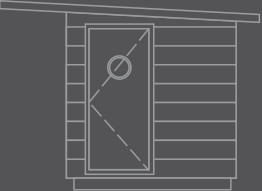
left



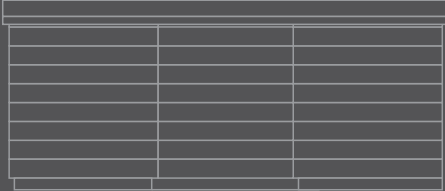
front



right

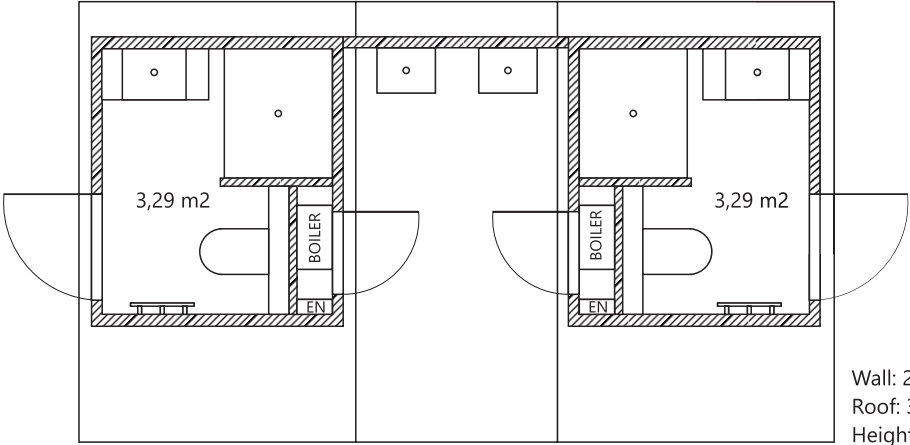


back



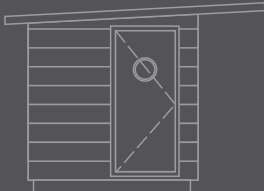
Lark SaniModule Lotus PREMIUM 5

The module is a complex of two SaniModule models with extra roof between. In this area there is a possibility to put two waschbasins.

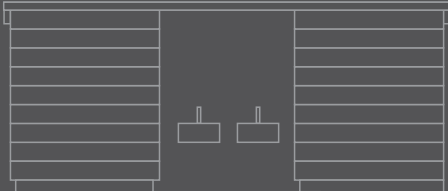


Wall: 2,0 x 2,3 m (1 module)
Roof: 3,5 x 5,6 m
Height: 2,55 m

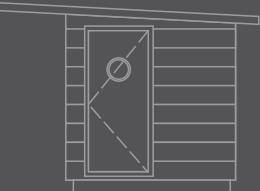
left



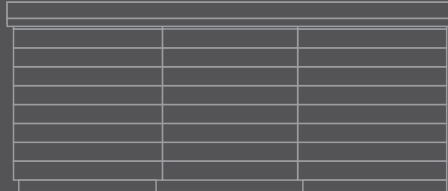
front



right



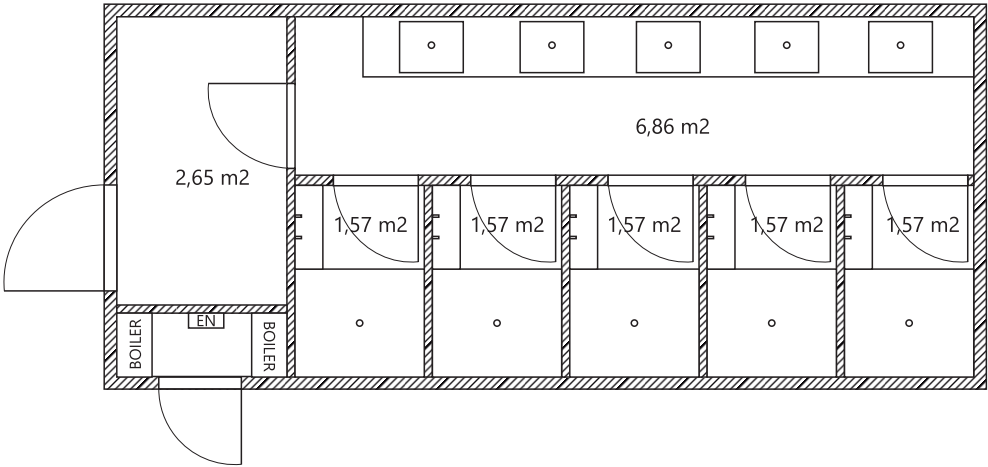
back



Lark SaniModule Lotus

SHOWER

The module includes five shower cabins and five countertop washbasins with mirrors.



Wall: 3,0 x 7,0 m
 Roof: 3,2 x 7,5 m
 Height: 2,55 m

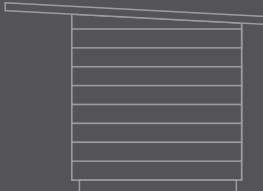
left



front



right



back



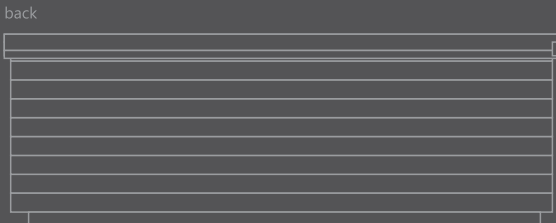
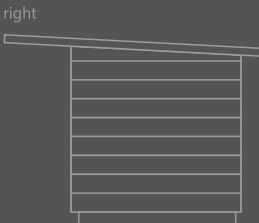
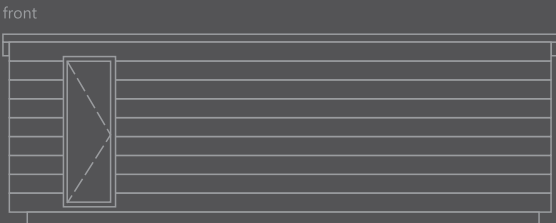
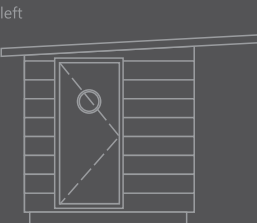
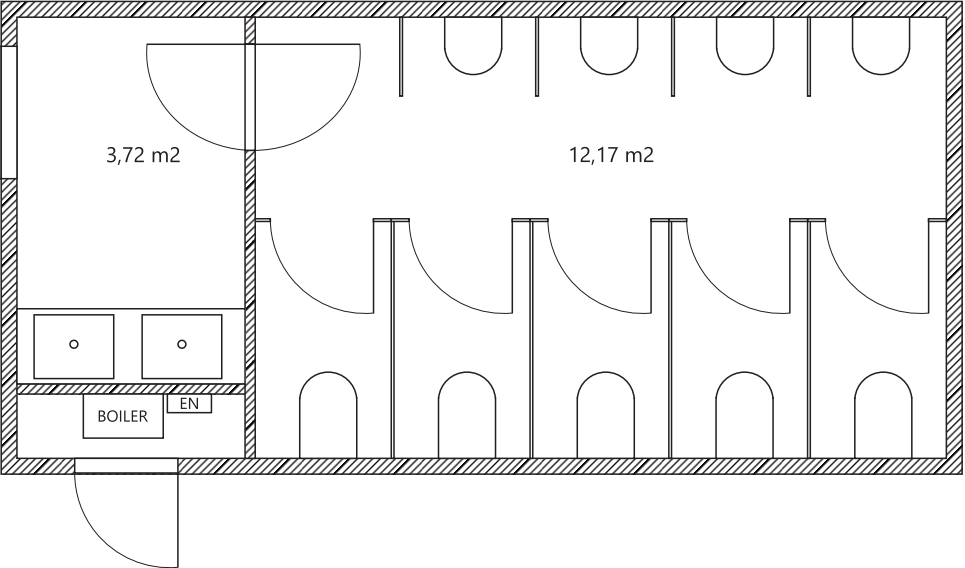
Lark SaniModule Lotus

TOILETS GENTELMAN

The module is a gentlemen toilet complex and includes five toilet cabins, four urinals and two countertop washbasins with mirrors.



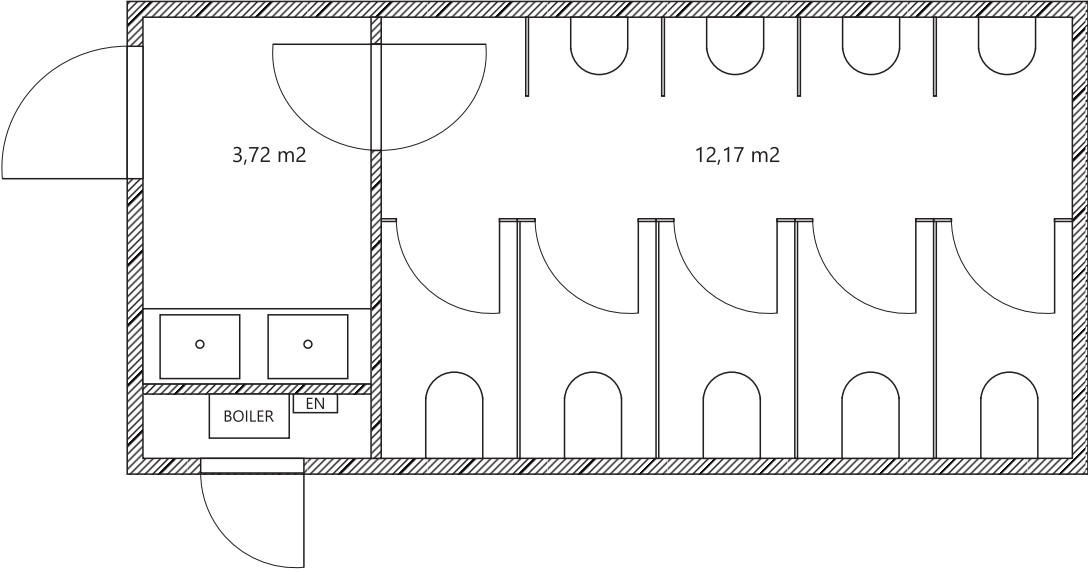
Wall: 3,0 x 6,1 m
Roof: 3,2 x 6,6 m
Height: 2,55 m



Lark SaniModule Lotus

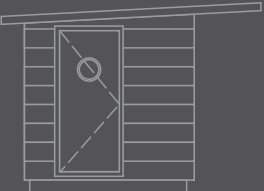
LAIIDIES TOILETS

The module is a ladies toilet complex and includes five toilet cubicles and five countertop washbasins with mirrors.



Wall: 3,0 x 6,1 m
Roof: 3,2 x 6,6 m
Height: 2,55 m

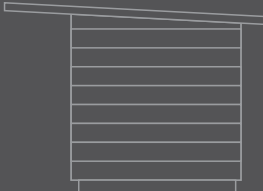
left



front



right



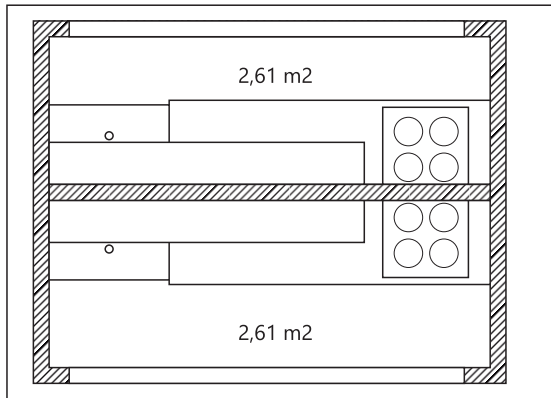
back



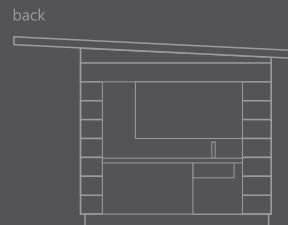
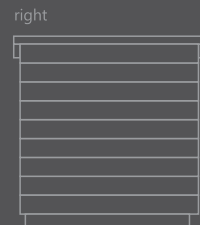
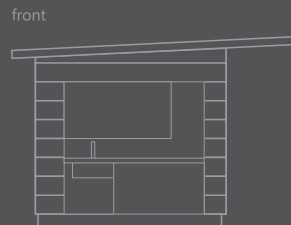
Lark SaniModule Lotus

KITCHEN DUO 1

This module has an access from both sides. Kitchen is open. It includes a sink and electric cooker. There are shelves above and below worktop.



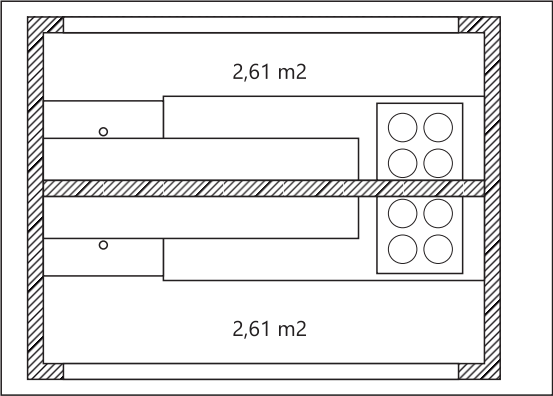
Wall: 2,3 x 3,0 m
Roof: 2,5 x 3,5 m
Height: 2,55 m



Lark SaniModule Lotus

KITCHEN DUO 2

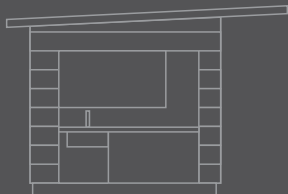
This module has an access from both sides. Kitchen is closed by external roller shutter. It includes a sink and electric cooker. There are shelves above and below worktop.



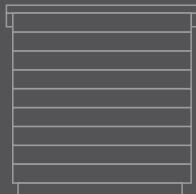
Wall: 2,3 x 3,0 m
Roof: 2,5 x 3,5 m
Height: 2,55 m



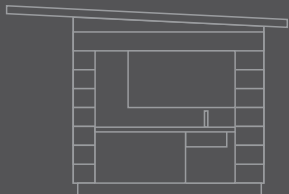
front



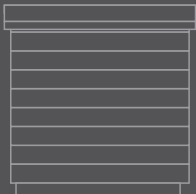
right



back



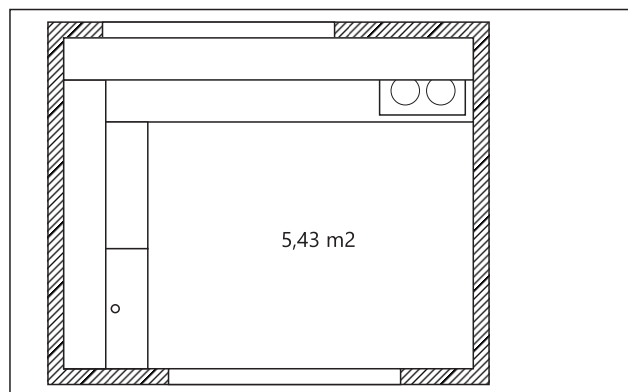
left



Lark SaniModule Lotus

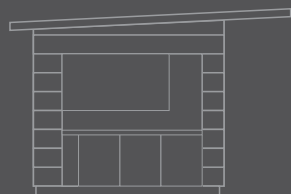
KITCHEN 1

An open kitchen module. It includes a sink and electric cooker. There are shelves above and below worktop.

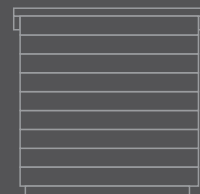


Wall: 2,3 x 2,8 m
Roof: 2,5 x 4,0 m
Height: 2,55 m

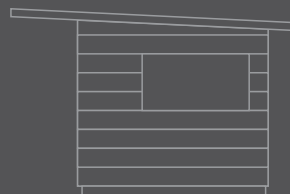
front



right



back



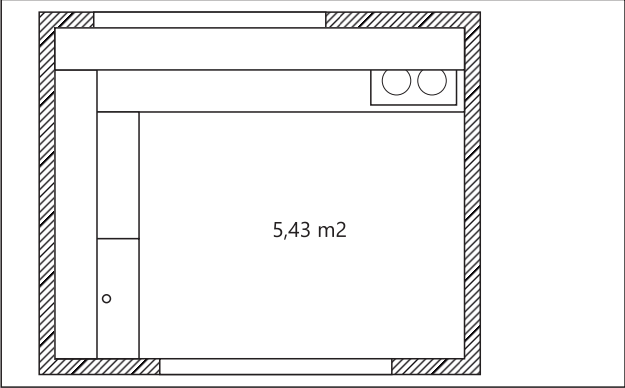
left



Lark SaniModule Lotus

KITCHEN 2

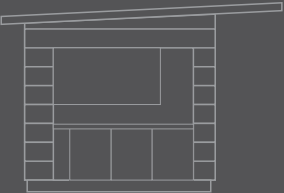
The kitchen module is closed by external roller shutter. It includes a sink and electric cooker. There are shelves above and below worktop.



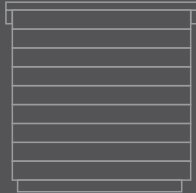
Wall: 2,3 x 2,8 m
Roof: 2,5 x 4,0 m
Height: 2,55 m



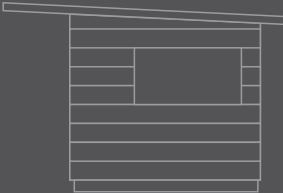
front



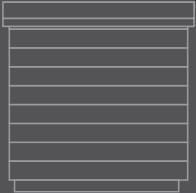
right



back



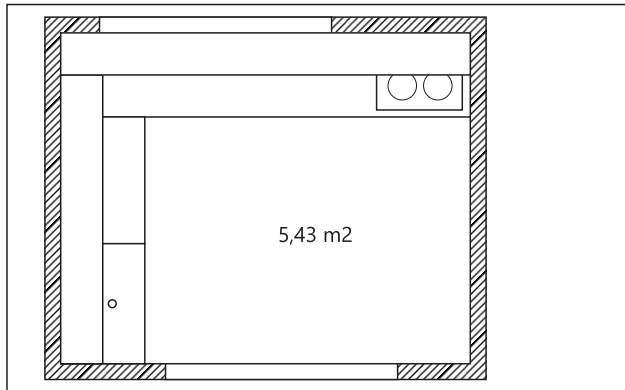
left



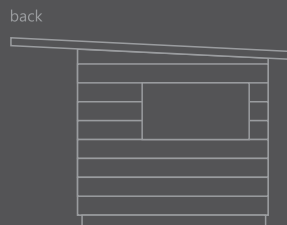
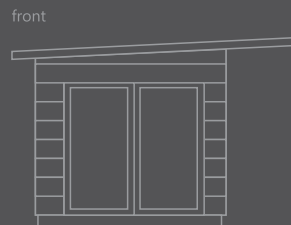
Lark SaniModule Lotus

KITCHEN 3

The kitchen module is closed by sliding doors. It includes a sink and electric cooker. There are shelves above and below worktop.



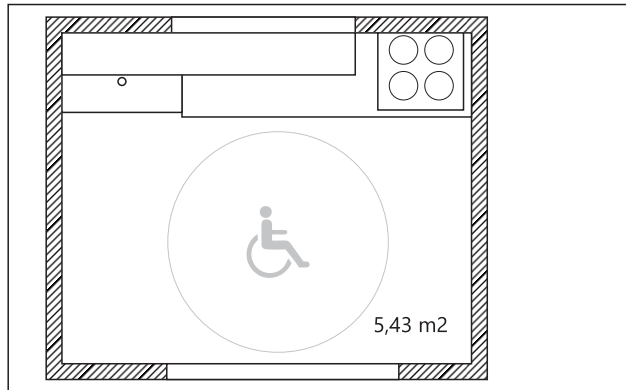
Wall: 2,3 x 2,8 m
Roof: 2,5 x 4,0 m
Height: 2,55 m



Lark SaniModule Lotus

KITCHEN ACCESS 1

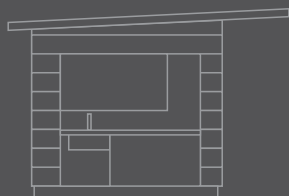
The module is adapted to the needs of people with reduced mobility. The kitchen is open. Kitchen includes electric cooker, under-counter fridge and sink. All shelves are designed with easy access for wheelchair users.



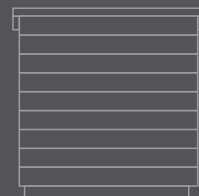
Wall: 2,3 x 2,8 m
Roof: 2,5 x 4,0 m
Height: 2,55 m



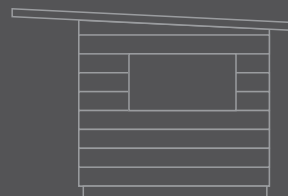
front



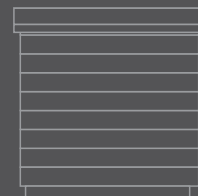
right



back



left

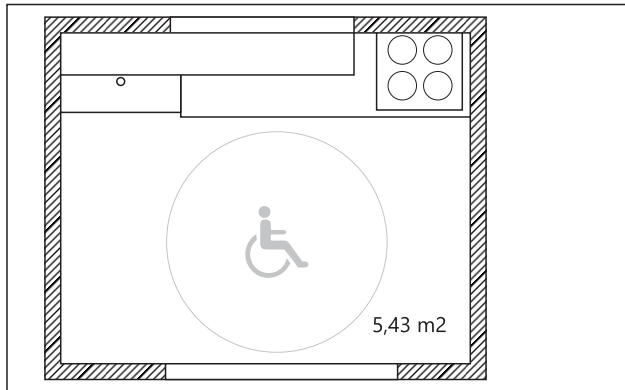


Lark SaniModule Lotus

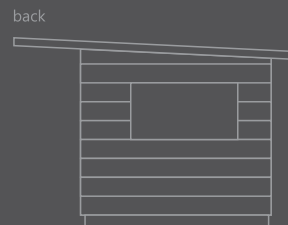
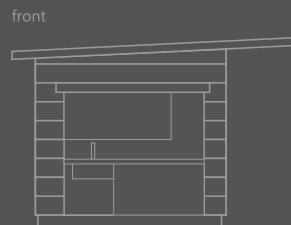
KITCHEN ACCESS 2

The module is adapted to the needs of people with reduced mobility. The kitchen module is closed by external roller shutter. Kitchen includes electric cooker, under-counter fridge and sink. All shelves are designed with easy access for wheelchair users.

35



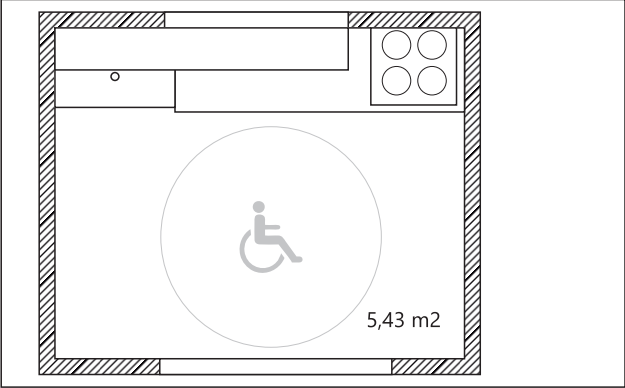
Wall: 2,3 x 2,8 m
Roof: 2,5 x 4,0 m
Height: 2,55 m



Lark SaniModule Lotus

KITCHEN ACCESS 3

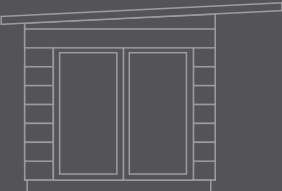
The module is adapted to the needs of people with reduced mobility. The kitchen module is closed by sliding doors. Kitchen includes electric cooker, under-counter fridge and sink. All shelves are designed with easy access for wheelchair.



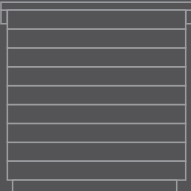
Wall: 2,3 x 2,8 m
Roof: 2,5 x 4,0 m
Height: 2,55 m



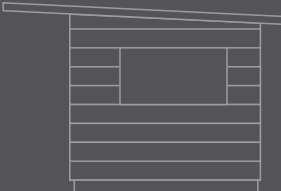
front



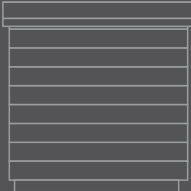
right



back



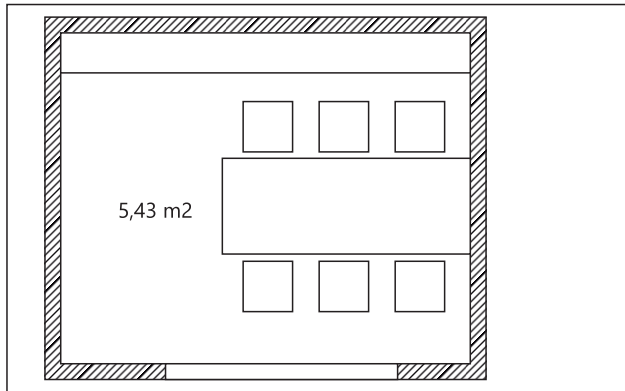
left



Lark SaniModule Lotus

CANTEEN

An open canteen module. It includes two shelves.

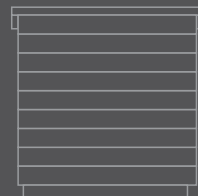


Wall: 2,3 x 2,8 m
Roof: 2,5 x 4,0 m
Height: 2,55 m

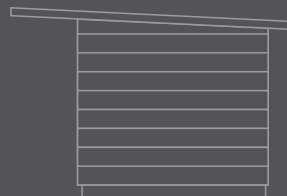
front



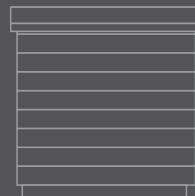
right



back



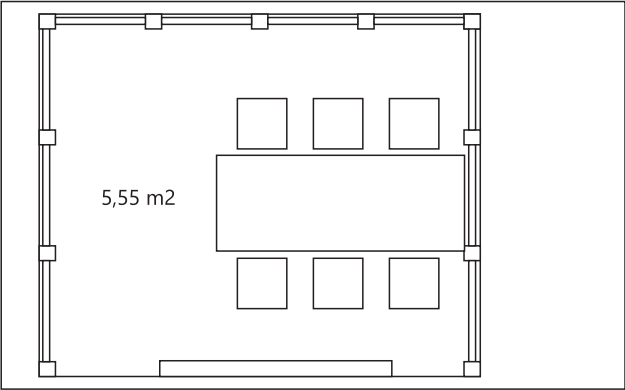
left



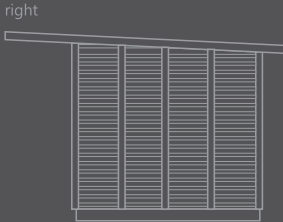
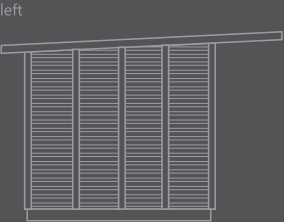
Lark SaniModule Lotus

OPEN WORK

An open canteen module. Walls are an openwork design. It includes two shelves.



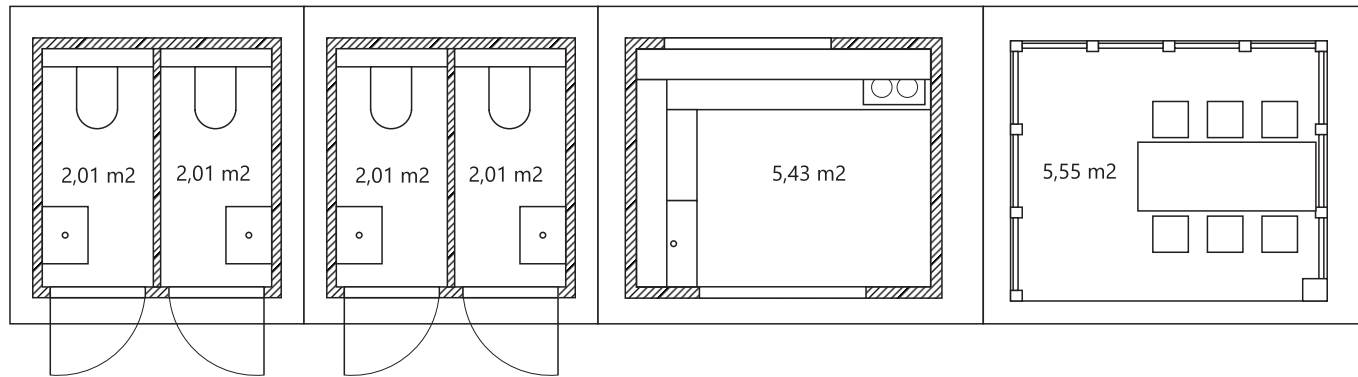
Wall: 2,3 x 2,8 m
Roof: 2,5 x 4,0 m
Height: 2,55 m



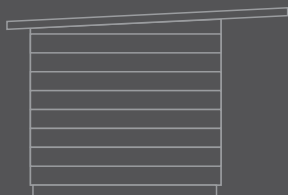
Lark SaniModule Lotus

EXEMPLARY CONNECTION OF MODULES

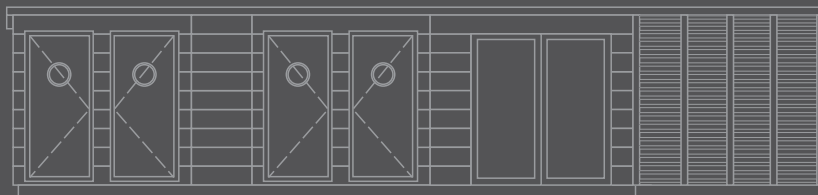
39



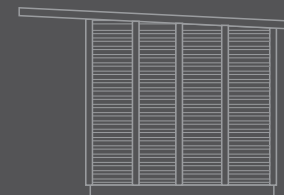
left



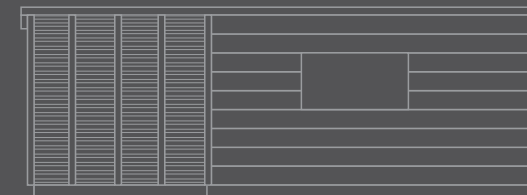
front



right



back

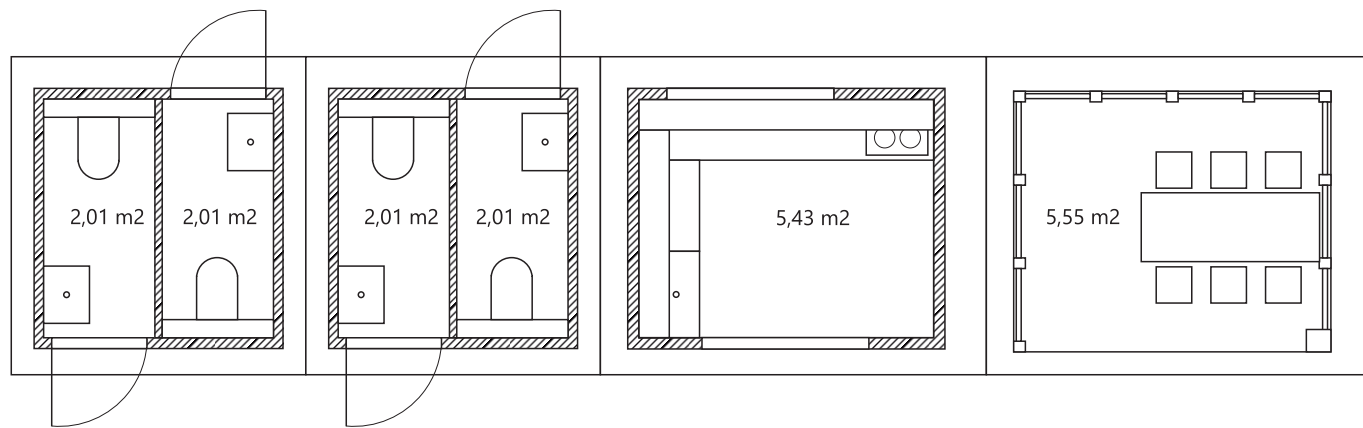




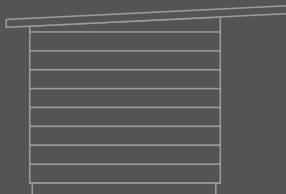
Lark SaniModule Lotus

EXEMPLARY CONNECTION OF MODULES

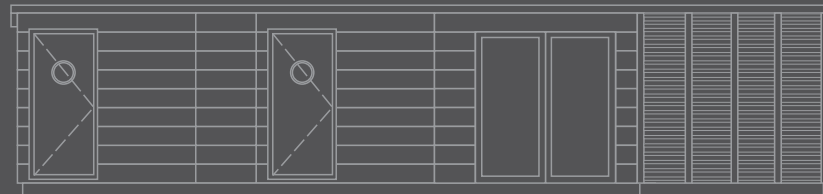
41



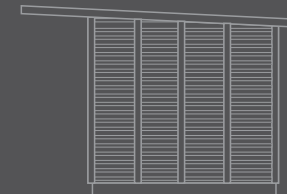
left



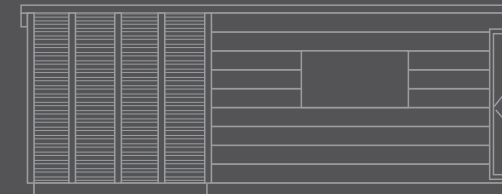
front

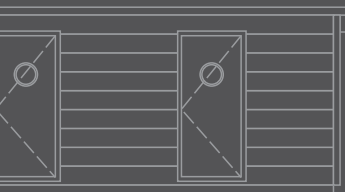


right



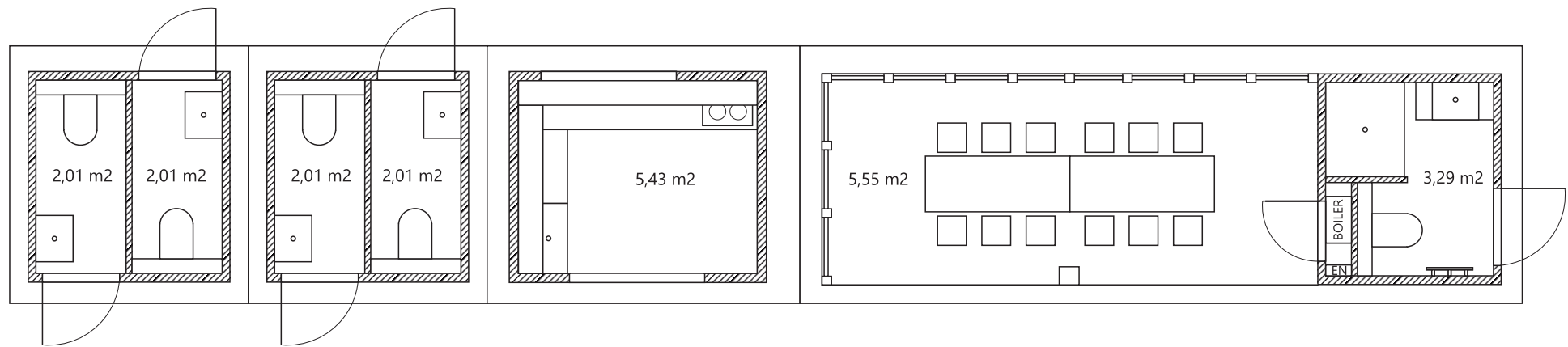
back



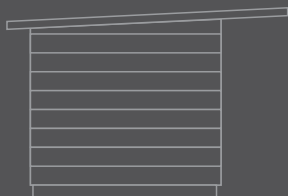


Lark SaniModule Lotus

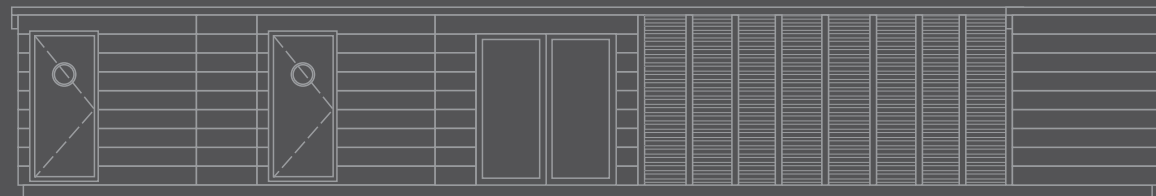
EXEMPLARY CONNECTION OF MODULES



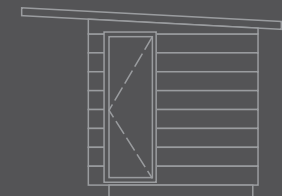
left



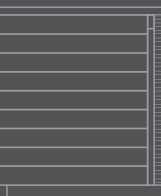
front

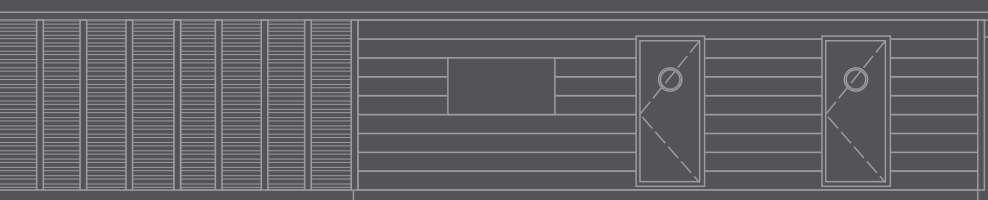


right



back





About us

For many years, we have been a leading producer of high-quality mobile homes in timber-framed technology. Due to the high quality of the products we offer, we have become the main importer of mobile homes to the central and western Europe. At this moment, the Mobile Homes Factory Lark Leisure Homes supplies hundreds of campsites and learn about their needs and requirements.

This is why the idea for the production of sanitary modules appeared, which will in no doubt adapt to the high standards of campsites and the expectations of the clients of tourist facilities across Europe.



Address
ul. Generała Sowińskiego 12A
76-150 Darłowo

Office
Phone: 94 314 9700
biuro@larkfactory.com

Sales Department
Phone: 94 314 9710
handlowy@larkfactory.com

See also our range of Mobile Homes



